

Canine Pregnancy@Relaxin Rapid Test (Relaxin)

Catalog No.: JCA026D

◇ INTENDED USE

Relaxin is a specific hormone generated mainly by the placenta. It is usually used as an indicator of pregnancy status in female dogs. In pregnant dogs, relaxin can be detected from 15 days after the nidation of fertilized egg in the uterus wall. The Canine Pregnancy@Relaxin Rapid Test is a rapid test to detect relaxin in bitches that may be pregnant. The suggested detection period is 20-30 days after mating. Too early detection may lead to a negative result when relaxin in serum is too low. It is suggested to repeat the test after 1 week if a negative result was observed.

Specimen: Serum, or plasma.

Detection Limit: 3.8ng/mL

◇ PRINCIPLE

The Canine Pregnancy@Relaxin Rapid Test is based on sandwich lateral flow immunochromatographic assay.

◇ REAGENTS AND MATERIALS

- Test device
- Disposable droppers
- Product manual

◇ STORAGE AND STABILITY

The kit can be stored at room temperature (4-30°C). The test kit is stable through to the expiration date on the package label. DO NOT FREEZE. Do not store the test kit in direct sunlight.

◇ SPECIMEN PREPARATION AND STORAGE

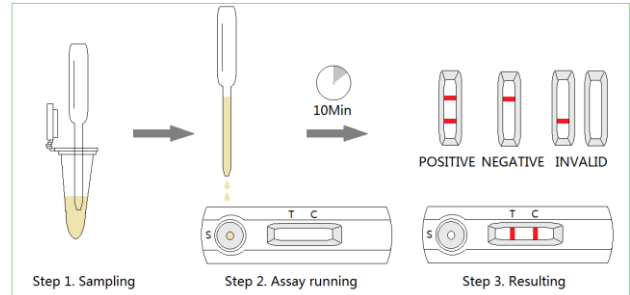
- Collect whole blood from the patient dog, centrifuge to separate the serum from the red cells, or place the whole blood into a tube which contains anticoagulants to get plasma.
- All specimen should be tested immediately. If not for immediate testing, they should be stored at 2-8°C.

◇ TEST PROCEDURE

- Bring all materials, including specimen and test device, recover to 15-25°C before running the assay.
- Remove the test device from the foil pouch and place it horizontally.
- Using the disposable dropper, place 3 to 4 drops of the prepared specimen into sample hole "S" of the test

device.

- Interpret the result at 10 minutes. Result after 10 minutes is considered as invalid.



◇ INTERPRETATION OF RESULTS

- Positive (+): The presence of both "C" line and zone "T" line. Faint results must be classified as positive.
- Negative (-): Only clear C line appear. No T line.
- Invalid: No colored line appears in C zone. No matter if T line appears.

◇ PRECAUTIONS

- All reagents must be at room temperature before running the assay.
- Do not remove test cassette from its pouch until immediately before use.
- Do not use the test beyond its expiration date.
- The components in this kit have been quality control tested as standard batch units. Do not mix components from different lot numbers.
- All specimens are potentially infectious. It must be treated according to the rules and regulations of local states.

◇ LIMITATION

The Canine Pregnancy@Relaxin Rapid Test is for in vitro veterinary diagnosis use only. All result should be considered with other clinical information available with veterinarian. It is suggested to apply a further confirmative method when positive result is observed.



J&G Biotech Ltd (Reg. No.: 08419172)

326 Cleveland Road, London, England E18 2AN, UK